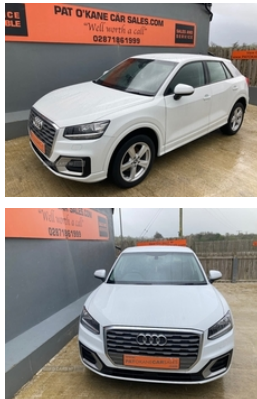


Audi Q2 30 TDI Sport 5dr | 2020

STUNNING WHITE # ONE OWNER # FULL SERVICE HISTORY #

£16,700



One Owner from new
2 X Keys
Service History (3 Services)
MOT Due 04/04/2025
Road tax £180 per year
Finance available 18+ Subject to status - and trade-ins welcome
subject to inspection
Please call before traveling to check availability & avoid
disappointment #

Vehicle Features

2 x SDXC card reader, 2 x USB charging points and 1 x Aux-in,
3x3 point rear seatbelts, 6 airbags - Front, 60/40 split folding
rear seat bench, Air inlet in manhattan grey metallic, Aluminium
interior element, Anti theft alarm, Anti theft wheel bolts, apple
iPhone, ASR and EDL, Audi drive select, Audi music interface -
apple iPod, Audi smartphone interface, Automatic start/stop
system with recuperation, Black window trims, Bluetooth
interface includes bluetooth audio streaming, Body colour door
mirrors, CD Drive, Central locking system with remote control
key, Chrome exhaust tailpipe, compatible MP3 players, Cruise
control, cupholder compartment in centre console, curtain and
front side airbags, DAB digital radio and AM/FM radio, Door sill
trims with aluminium inlay, dynamic route guidance with TMC,
Dynamic suspension, Electrically adjustable and heated door
mirrors with integrated LED side indicators, Electromechanical
parking brake, Electronically operated child locks, Electronic
stabilisation control including ABS, Extended and proactive
pedestrian protection, Front/rear floor mats, front and rear door
pockets, Front and rear electric windows, Front centre armrest,
Front headrests, Front sports seats, Front underbody guard and
rear diffuser trim in selenite silver, Front windscreen with grey
tinted sunband, Halogen headlights including headlight range

Miles:	37071
Fuel Type:	Diesel
Transmission:	Manual
Colour:	White
Engine Size:	1598
Body Style:	Sport utility vehicle
Insurance group:	15E
Reg:	DE20KDJ

Technical Specs

DIMENSIONS

Length:	4191mm
Width:	1794mm
Height:	Not Availablemm
Seats:	5
Luggage Capacity (Seats Up):	405L
Gross Weight:	1930KG
Max. Loading Weight:	585KG

PERFORMANCE & ECONOMY

Fuel Consum. (Urban Cold):	52.3MPG
Fuel Consum. (Extra Urban):	67.3MPG
Fuel Consum. (Combined):	60.1MPG
Fuel Tank Capacity:	50L
Number Of Gears:	6 SPEED
Top Speed:	122MPH
Acceleration 0-100 km/h:	10.3s
Engine Power BHP:	114BHP

adjustment, Height/reach adjust steering wheel, High gloss black radiator grille, Hill hold assist, Interior mirror, ISOFIX child seat mounting for front passenger with airbag deactivation and outer rear seat including top tether attachment point for outer rear seats, LED indicator lights, Manual folding door mirrors, Manual seat adjustment including seat height adjustment for front seats, MMI - Multi Media Interface control system, MMI radio plus with 7" colour MMI screen and MMI controller, MMI SD card integrated nav with 3D map display, MMI search, Multi collision brake assist, natural voice recognition and myAudi special destinations, Non smoking pack - Q2, Power operated tailgate, Pre-sense front with pedestrian recognition, Progressive steering, Rain and light sensors, Rear wiper, Seatbelt monitoring, Service interval indicator, Side skirts in manhattan grey, storage compartment in rear centre console, Storage compartments - Glovebox, Three rear headrests, Titanium grey cloth headlining, Tyre pressure warning light, USB storage media, Warning triangle and first aid kit, Wheel arch trims in manhattan grey