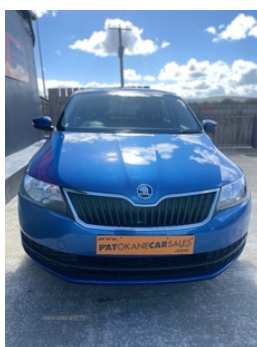


Skoda Rapid 1.4 TDI CR 90 S 5dr | 2017

£ 20 ROAD TAX # ONE OWNER # FULL HISTORY

£7,950



One Owner from new
2 X Keys
Service History (5 Services)
MOT Due 29/01/2025
Road tax only £20 per year
Finance available 18+ Subject to status - and trade-ins welcome subject to inspection
Please call before traveling to check availability & avoid disappointment

Vehicle Features

3x3 point rear seatbelts, 4 speakers, 12V socket in centre console, 60/40 split fold rear seat back, ABS+ASR+MSR, Aero wiper + intermittent function, Air conditioning with pollen filter, Alarm/immobiliser, Body colour bumpers, Body colour door handles, Body colour door mirrors, Centre console with storage/cupholders, Cloth upholstery, Curtain airbags, Daytime running lights, Driver and passenger airbags, Driver seatbelt warning indicator, Driver seat height adjust, Electrically adjustable and heated door mirrors, Electric front windows, ESP, Front cupholders, Fuel cut off safety device, HBA (Hydraulic Brake Assist), Heated rear window, Height/reach adjust steering wheel, Height adjustable front headrests, Height adjustable headlamps, Height adjustable rear head restraints, Interior light, Isofix child seat preparation, Luggage compartment lighting, Outside temperature gauge, PAS, Passenger airbag deactivate switch, Passenger sunvisor with vanity mirror, Radiator grille with chrome surround, Radio, Rear wash/wipe, Remote control central locking, Service indicator, Side airbags, Storage compartment in rear doors, Ticket holder, Traction control, Two

Miles:	74707
Fuel Type:	Diesel
Transmission:	Manual
Colour:	Blue
Engine Size:	1422
CO2 Emission:	101
Body Style:	Hatchback
Insurance group:	14E
Reg:	AE17OMK

Technical Specs

DIMENSIONS	
Length:	4304mm
Width:	1706mm
Height:	1459mm
Seats:	5
Luggage Capacity (Seats Up):	415L
Gross Weight:	1689KG
Max. Loading Weight:	535KG

PERFORMANCE & ECONOMY

Fuel Consum. (Urban Cold):	65.7MPG
Fuel Consum. (Extra Urban):	80.7MPG
Fuel Consum. (Combined):	74.3MPG
Fuel Tank Capacity:	55L
Number Of Gears:	5 SPEED
Top Speed:	114MPH
Acceleration 0-100 km/h:	11.6s
Engine Power BHP:	88.5BHP

tone horn, Tyre pressure monitor