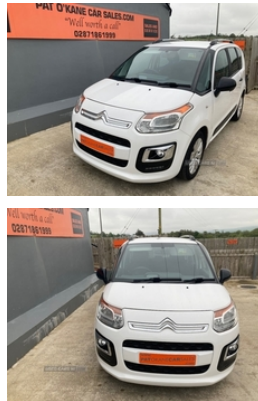


The Old Forge Garage 191A Tamnaherin Road Drumahoe Derry ~ Londonderry  
BT473NP, Drumahoe, Bt473NP  
Office: 02871301308

## Citroen C3 Picasso 1.6 BlueHDi Edition 5dr | 2016

ONLY 39K MILES # FULL HISTORY # £ 20 ROAD TAX



3 Owners from new  
2 X Keys  
Service History ( 7 Services )  
MOT Due 23/07/2024  
Road tax £20 per year  
Finance available 18+Subject to status - trade-ins welcome  
subject to inspection  
# Please call before traveling to check availability & avoid  
disappointment #

### Vehicle Features

3 retractable rear head restraints, 5 three point inertia reel seatbelts, 6 way adjustable drivers seat, 12V Accessory socket, ABS + EBD + EBA, Auto door lock when driving, Automatic activation of hazard warning lights, Automatic boot locking, Auxiliary input socket, Black bumper inserts, Black side rubbing strips, Body coloured bumpers, Carpet mats, Central dashboard storage with lid, Child lock indicator, Chrome air vent surround, Chrome fog light surround, Chrome gear lever surround, Cornering light, Cruise control + speed limiter, Curtain airbags, Diesel particulate filter, Driver/front passenger airbag, Electrically adjustable door mirrors, Electric front windows + drivers one touch/anti-trap, ESP, Exterior temperature gauge, Front fog lights, Front head restraints, Front reading lights, Height/reach adjust steering wheel, Height adjustable driver's seat, Lateral airbags, LED daytime running lights, Liberia cloth upholstery, Open dashoard storage compartment for driver/front passenger, Panoramic windscreen, Passenger underseat drawer, Pollen filter, RDS stereo radio/MP3/CD player with steering mounted controls, Rear parcel shelf, Rear parking sensor, Rear wiper, Remote central locking + deadlocks, Roof bars, Scented air freshener, Seatbelt pretensioners and force limiters, Seatbelt warning, Service interval indicator, Sliding rear seats, Space Box

**£7,950**

Miles:	39187
Fuel Type:	Diesel
Transmission:	Manual
Colour:	White
Engine Size:	1560
CO2 Emission:	101
Body Style:	MPV
Insurance group:	16E
Reg:	BP16DFZ

### Technical Specs

DIMENSIONS	
Length:	4078mm
Width:	1766mm
Height:	1631mm
Seats:	5
Luggage Capacity (Seats Up):	500L
Gross Weight:	1800KG
Max. Loading Weight:	380KG
PERFORMANCE & ECONOMY	
Fuel Consum. (Urban Cold):	60.1MPG
Fuel Consum. (Extra Urban):	80.7MPG
Fuel Consum. (Combined):	72.4MPG
Fuel Tank Capacity:	50L
Number Of Gears:	5 SPEED
Top Speed:	111MPH
Acceleration 0-100 km/h:	13.3s
Engine Power BHP:	97.9BHP

Storage system, Split folding rear seats, Trip computer, Two rear outer seat isofix location points, Tyre pressure monitor, Variable PAS