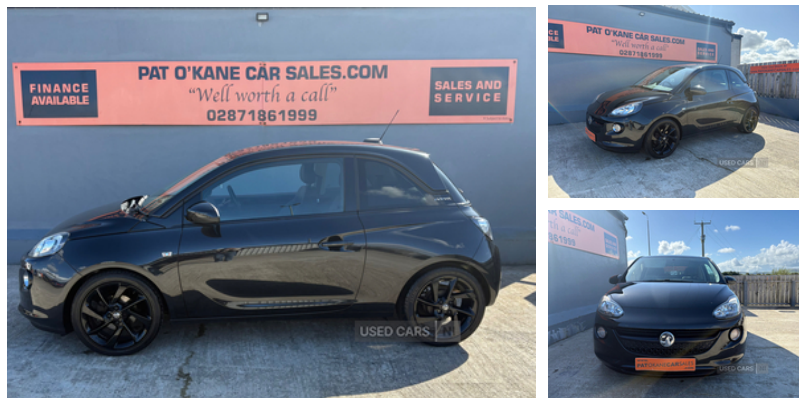


Vauxhall Adam 1.2i Energised 3dr | 2017

LOW INSURANCE # ONE OWNER #

£6,750



One Owner from new
MOT Due 23/11/2025
Road tax £195 per year
Finance available 18+ Subject to status - trade-ins welcome
subject to inspection
Please call before traveling to check availability & avoid
disappointment #

Vehicle Features

2 rear cupholders in centre console, 4 speakers, 12V power socket in centre console, 17" Hurricane alloy wheels in black gloss finish, 50/50 split folding rear seat, ABS, Adaptive brake lights, Air conditioning, Air recirculation control/activation light, Anti-drill door locks, Auxiliary input socket, Bluetooth audio streaming, Bluetooth system, Body colour door handles, Colour-keyed fleece velour carpets, Cruise control + speed limiter, Dark tinted rear windows, Digital clock, DMB digital radio, door panel inserts in exterior colour, Driver/front passenger assist handle, Driver/front seatbelt pretensioners, Electric tailgate lock with touchpad, Electrochromic automatic anti-dazzle rear view mirror, Electronic odometer and trip odometer, ESP plus, Facia, Folding key, Front body-lock seatbelt pretensioners, Front door pockets, Front grille bar - Black jack, Front seats - 'Easy Entry', Height/reach adjust steering wheel, Height adjustable driver's seat, Hill start assist, Illuminated load area, Immobiliser, IntelliLink infotainment system, Interior courtesy light operated by all doors, Laminated windscreen, Leather steering wheel, LED daytime running lights, LED tail lights, Locking wheel nuts, Low fuel level warning light, Luggage cover, Moroccan cloth upholstery, On board computer, Radio/CD + MP3, Remote central locking, Rev counter, Roof colour pack (Black Jack) - Adam, Seatbelt warning, Service interval indicator, Side airbags, Side impact protection beams, Speed sensitive power steering, Sports pedals, Steering wheel mounted audio controls, Traction

Miles:	52841
Fuel Type:	Petrol
Transmission:	Manual
Colour:	Black
Engine Size:	1229
CO2 Emission:	125
Body Style:	Hatchback
Insurance group:	2E
Reg:	KXZ2427

Technical Specs

DIMENSIONS	
Length:	3698mm
Width:	1720mm
Height:	1484mm
Seats:	4
Luggage Capacity (Seats Up):	170L
Gross Weight:	1470KG
Max. Loading Weight:	369KG
PERFORMANCE & ECONOMY	
Fuel Consum. (Urban Cold):	39.2MPG
Fuel Consum. (Extra Urban):	65.7MPG
Fuel Consum. (Combined):	53.3MPG
Fuel Tank Capacity:	38L
Number Of Gears:	5 SPEED
Top Speed:	103MPH
Acceleration 0-100 km/h:	14.9s
Engine Power BHP:	68.4BHP

control, Twin sunvisors with document holders and drivers
covered mirror, Tyre inflation kit, Tyre pressure monitoring
system with individual tyre pressure display, USB connection